



Google Custom Search

HOME | NEWS | TRAVEL | ART & STYLE | COMPENDIUM | SC BLOG

Physics | Chemistry | Geology and palaeontology | Biology | Environment | Astronomy | Health | Technology | — In pictures | — InMotion

Where am I? > [Home](#) > [News](#) > [Technology](#)

Researchers write protein nanoarrays using a fountain pen and electric fields

Science Centric | 14 October 2008 12:38 GMT —

Nanotechnology offers unique opportunities to advance the life sciences by facilitating the delivery, manipulation and observation of biological materials with unprecedented resolution. The ability to pattern nanoscale arrays of biological material assists studies of genomics, proteomics and cell adhesion, and may be applied to achieve increased sensitivity in drug screening and disease detection, even when sample volumes are severely limited.

Unfortunately, most tools capable of patterning with such tiny resolution were developed for the silicon microelectronics industry and cannot be used for soft and relatively sensitive biomaterials such as DNA and proteins.

Now a team of researchers at Northwestern University has demonstrated the ability to rapidly write nanoscale protein arrays using a tool they call the nanofountain probe (NFP).

'The NFP works much like a fountain pen, only on a much smaller scale, and in this case, the ink is the protein solution,' said Horacio Espinosa, head of the research team and professor of mechanical engineering in the McCormick School of Engineering and Applied Science at Northwestern.

The results, which is published online this week in the Proceedings of the National Academy of Sciences (PNAS), include demonstrations of sub-100-nanometre protein dots and sub-200-nanometre line arrays written using the NFP at rates as high as 80 microns/second.

Each nanofountain probe chip has a set of ink reservoirs that hold the solution to be patterned. Like a fountain pen, the ink is transported to sharp writing probes through a series of microchannels and deposited on the substrate in liquid form.

'This is important for a number of reasons,' said Owen Loh, a graduate student at Northwestern who co-authored the paper with fellow student Andrea Ho. 'By maintaining the sensitive proteins in a liquid buffer, their biological function is less likely to be affected. This also means we can write for extended periods over large areas without replenishing the ink.'

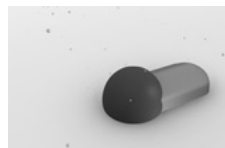
Earlier demonstrations of the NFP by the Northwestern team included directly writing organic and inorganic materials on a number of different substrates. These included suspensions of gold nanoparticles, thiols and DNA patterned on metallic- and silicon-based substrates.

In the case of protein deposition, the team found that by applying an electrical field between the nanofountain probe and substrate, they could control the transport of protein to the substrate. Without the use of electric fields, protein deposition was relatively slow and sporadic. However, with proper electrical bias, protein dot and line arrays could be deposited at extremely high rates.

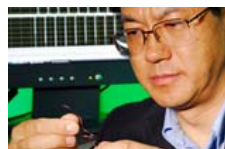
'The use of electric fields allows an additional degree of control,' Espinosa said. 'We were able to create dot and line arrays with a combination of



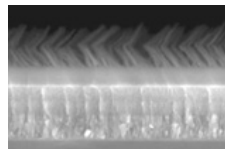
DON'T MISS —



[Findings suggest nanowires ideal for electronics manufacturing](#) — [14 Nov] — Researchers have discovered that tiny structures called silicon nanowires might be ideal for manufacturing in future computers...



[New generator produces AC current by stretching wires](#) — [9 Nov] — Researchers have developed a new type of small-scale electric power generator able to produce alternating current through...



[Solar power game-changer: 'Near perfect' absorption of sunlight, from all angles](#) — [4 Nov] — No matter which way you look at it, the notion of harvesting energy from the sun to power our homes and businesses is more...



[Helping wean the chemicals industry off crude oil](#) — [30 Oct] — CSIRO scientists have joined one of the world's largest biotechnology consortia to help develop crops which produce oils...

Tags

[arrays](#), [biological](#), [deposition](#), [electrical](#), [engineering](#), [nanofountain](#), [protein](#), [substrate](#)

LATEST | MOST E-MAILED | ARCHIVE

Complex systems and Mars missions help understand how life began
 Researchers rapidly hunt down and find new genes that lead to cancer
 Physicists part of research team testing Nobel-winning theory
 Helping children and teens deal with stress in an uncertain time
 Study reveals smoking's effect on nurses' health, death rates
 Researchers identify molecule linked to aggressive cancer growth, spread
 Nanoparticles deliver their cargo, then disappear
 Findings suggest nanowires ideal for electronics manufacturing
 Sicilian enters British genetic language
 Mineral kingdom has co-evolved with life
 A single gene leads yeast cells to cooperate against threats
 How the APOE gene can modify your risk for Alzheimer's disease

[More recent stories...](#)

Cumulative radiation exposure shows increased cancer risk for emergency department patients
 Dye-coated glass to channel energy into solar cells
 Intestinal bacteria promote - and prevent! - inflammatory bowel disease
 Scientists discover how rheumatoid arthritis causes bone loss
 The upside to allergies: Cancer prevention
 Protein on 'speed' linked to ADHD
 Fish scales show ocean fate of Atlantic salmon
 Common bronchodilator linked to increased deaths
 Mast cells play a role in assisting immune system to combat tularaemia
 Joint replacement may improve osteoarthritis symptoms in older adults
 Solar eclipse on Friday, 1 August
 Major discovery from MIT primed to unleash solar revolution

2007 — [I](#) [II](#) [III](#) [IV](#) [V](#) [VI](#) [VII](#) [VIII](#) [IX](#) [X](#) [XI](#) [XII](#)

2008 — [I](#) [II](#) [III](#) [IV](#) [V](#) [VI](#) [VII](#) [VIII](#) [IX](#) [X](#) [XI](#)

speed and resolution not possible using other techniques.'

Positively charged proteins can be maintained inside the fountain probe by applying a negative potential to the NFP reservoirs with respect to a substrate. Reversing the applied potential then allows protein molecules to be deposited at a desired site.

To maximise the patterning resolution and efficiency, the team relied on computational models of the deposition process. 'By modelling the ink flow within the probe tip, we were able to get a sense of what conditions would yield optimal patterns,' says Jee Rim, a postdoctoral researcher at Northwestern.

Espinosa collaborated closely with Neelesh Patankar, associate professor of mechanical engineering at Northwestern, and Punit Kohli, assistant professor of chemistry and biochemistry at Southern Illinois University, Carbondale.

'We are very excited by these results,' said Espinosa. 'This technique is very broadly applicable, and we are pursuing it on a number of fronts.' These include single-cell biological studies and direct-write fabrication of large-scale arrays of nanoelectrical and nanoelectromechanical devices.

'The fact that we can batch fabricate large arrays of these fountain probes means we can directly write large numbers of features in parallel,' added Espinosa. 'The demonstration of rapid protein deposition rates further supports our efforts in producing a large-scale nanomanufacturing tool.'

Source: [Northwestern University](#)

Protein Microarrays

Human Normal & Tumor Tissues Human, Mouse, Rat & Cell Lysates
www.proteinbiotechnologies.com

Gold Fountain Pen

Quality Fountain Pens Available by Top Brands. Place an Order Today!
www.ColoradoPen.com

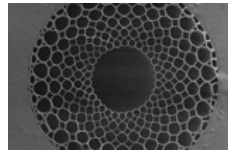
"How To Lose Stomach Fat"

Finally, A Diet That Really Works! As Seen On CNN, NBC, CBS & Fox News
www.Wu-YiSource.com

PepTalk

Conference/expo focussing on early stage discovery & downstream dev
www.chi-PepTalk.com

Ads by Google



— [Advertise here](#)

[Laser flashes without bounds](#) — [29 Oct] — Researchers of the Max Born Institute for Nonlinear Optics and Short-Pulse Spectroscopy (MBI) have developed a novel optical...



[CSIRO and the bioeconomy at AusBiotech 2008](#) — [27 Oct] — AusBiotech will hold its 2008 conference, Building a Bioeconomy - climate, food, health, investment, fuel at the Melbourne...

More [Technology...](#)